

Capital Asset Advisory Committee 2018 Capital Improvement Program Financial Status as of April 15, 2021

April 15, 2021

2018 CAPITAL IMPROVEMENT PROGRAM – FINANCIAL STATUS 4/15/2021

Revenue

\$ 567,000,000	Bond Issuance
\$ 50,165,349	Premium on First Bond Issuance
\$ 68,309,148	Premium on Second Bond Issuance
\$ 11,829,099	Interest Through February 2021, net of bank fees
\$ 51,353,182	Fiscal Years 2019, 2020 and 2021 Capital Transfers (COP Principal & Interest Payments Removed)
\$ (2,948,716)	Issuance Costs (Both issuances)
\$ 745,708,062	

Expenses

As of April 15, 2021

\$ 297,160,452	Total Expended - All projects
\$ 116,815,193	Total Encumbered - All projects

Charter Projects

\$ 45,129,440	Total Expended - Charter
\$ 2,774,944	Total Encumbered - Charter

15 Contracts on May 8 BOE Agenda for Approval

As of March 15, 2021

\$ 288,953,852	Total Expended - All projects
\$ 109,715,881	Total Encumbered - All projects

\$ 43,909,691	Total Expended - Charter
\$ 3,345,891	Total Encumbered - Charter

2018 CAPITAL IMPROVEMENT PROGRAM – FINANCIAL STATUS 4/15/2021

Funding Breakdown 2018 Capital Improvement Program

\$	567,000,000	First & Second Bond Issuances
\$	50,165,349	Premium on First Bond Issuance
\$	68,309,148	Premium on Second Bond Issuance
\$	11,829,099	Bond Interest Through February 2021, Net of Bank Fees
\$	51,353,182	FY 2019, 2020 & 2021 Capital Transfers (COP Principal & Interest Removed)
\$	(2,948,716)	Issuance Costs (Both Issuances)
<hr/>		
\$	745,708,062	Funds to Date
	TBD*	Future Bond Interest Earnings
\$	83,601,924	4 Years Capital Transfer
	TBD*	Interest on Capital Transfer
<hr/>		
\$	829,309,986	Preliminary Total

TBD* To Be Determined

2018 CAPITAL IMPROVEMENT PROGRAM – FINANCIAL STATUS 4/15/2021

May 6 BOE Items

Construction Contracts Bid: Chatfield HS, Dakota Ridge HS, Everett MS, Westridge ES, 5th Floor Ed Center, DW Playgrounds, DW LED Project,

2018 CAPITAL IMPROVEMENT PROGRAM – FINANCIAL STATUS 4/15/2021

Work in Progress

Alameda Addition / Renovation

Columbine HS Aux Gym, Exterior Entry

Conifer HS Aux Gym

Golden HS Artificial Turf & Track

Green Mountain HS Aux Gym

Jefferson Jr./Sr. HS Addition / Renovation

Kendrick Lakes ES Replacement

Bell MS Addition

Manning School Addition

Parmalee ES Addition / Renovation

Foster ES Addition / Renovation

Warren Tech South

Wayne Carle MS Addition

Lumberg ES Addition / Renovation

Pomona HS Addition/Renovation

Artificial Turf & All-Weather Tracks @ 4 HS

29 Efficiency & Future Ready (Summer)

LED Replacement Phase II 11 Sites

7 Playgrounds, 5 Paving Projects

2018 CAPITAL IMPROVEMENT PROGRAM – FINANCIAL STATUS 4/15/2021

In Design

Evergreen HS Renovation

Evergreen MS Renovation

Powderhorn Addition/Renovation

Prospect Valley ES Replacement

Ralston Valley HS Addition/Renovation

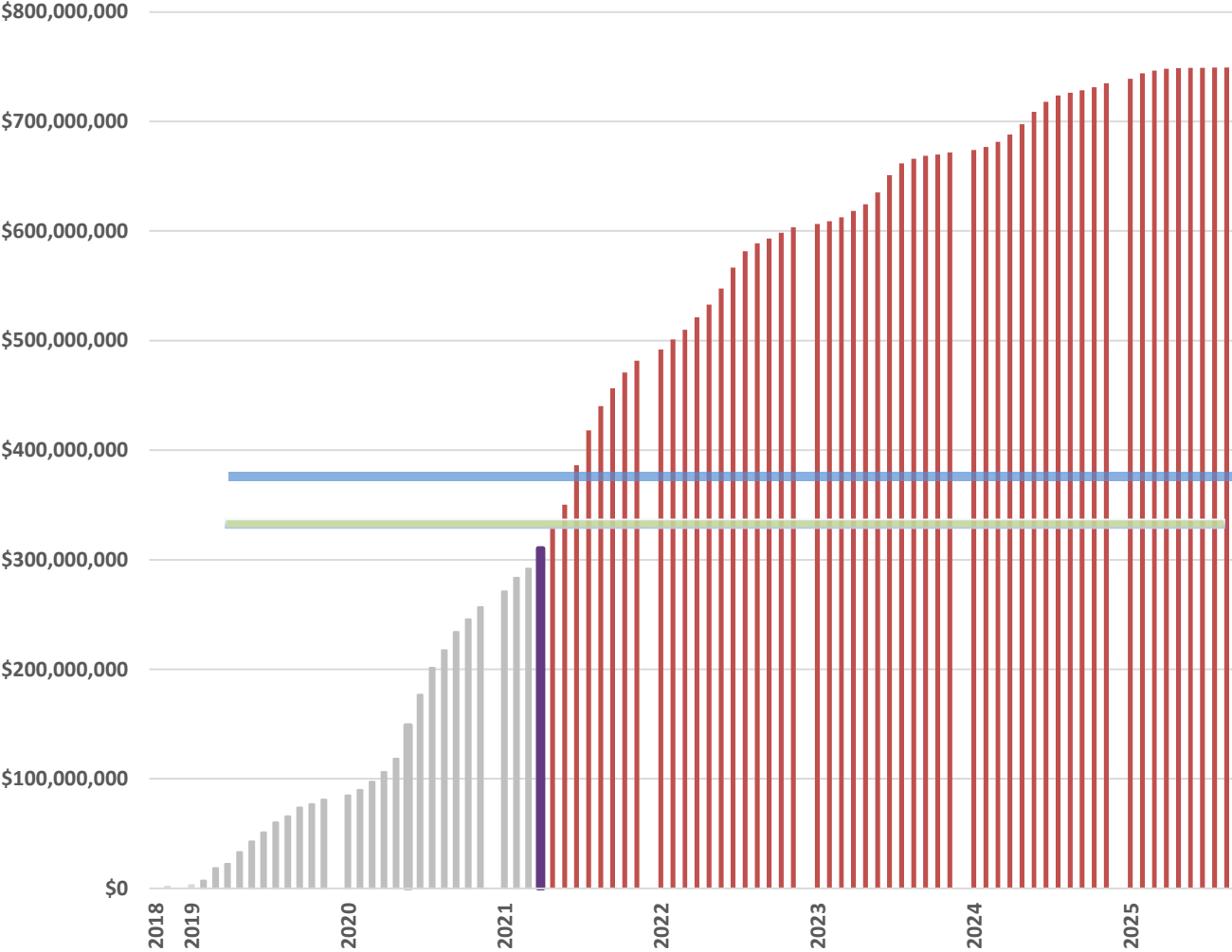
Standley Lake HS Addition/Renovation

Jeffco Open School Addition/Renovation

Furniture, Fixtures & Equipment (FF&E) 14 Sites

2018 CAPITAL IMPROVEMENT PROGRAM – FINANCIAL STATUS 4/15/2021

Cash Flow





CAAC Design and Construction Update

4-15-2021

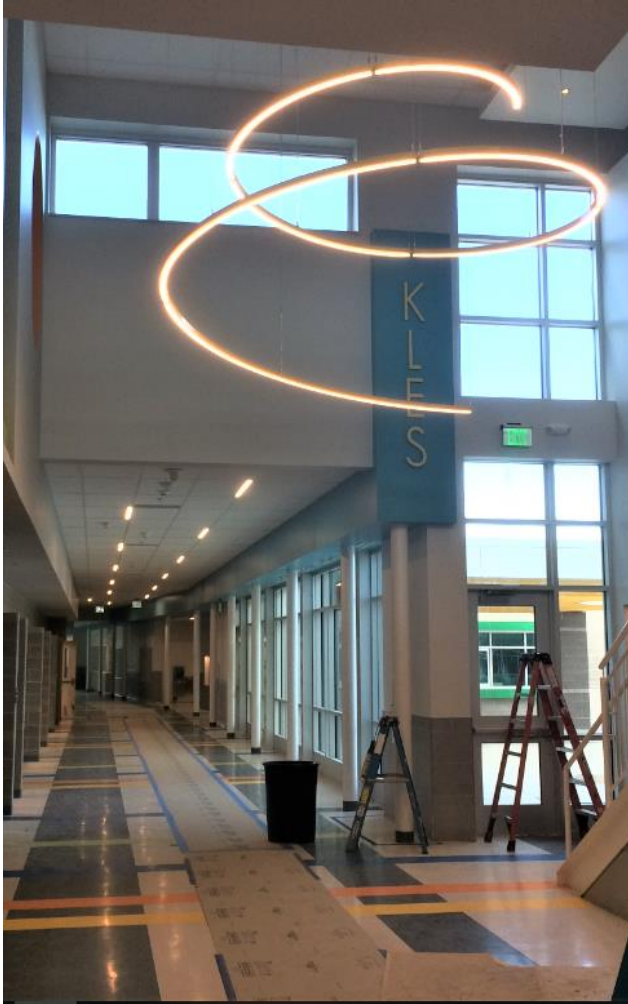


2021 Projects

New Buildings & Additions

Kendrick Lakes ES – Replacement Larson Incitti – GC Roche

Complete
4/23 10:00AM
Ribbon Cutting



Conifer HS – Aux Gym Addition Cannon – CMGC FCI

Construction



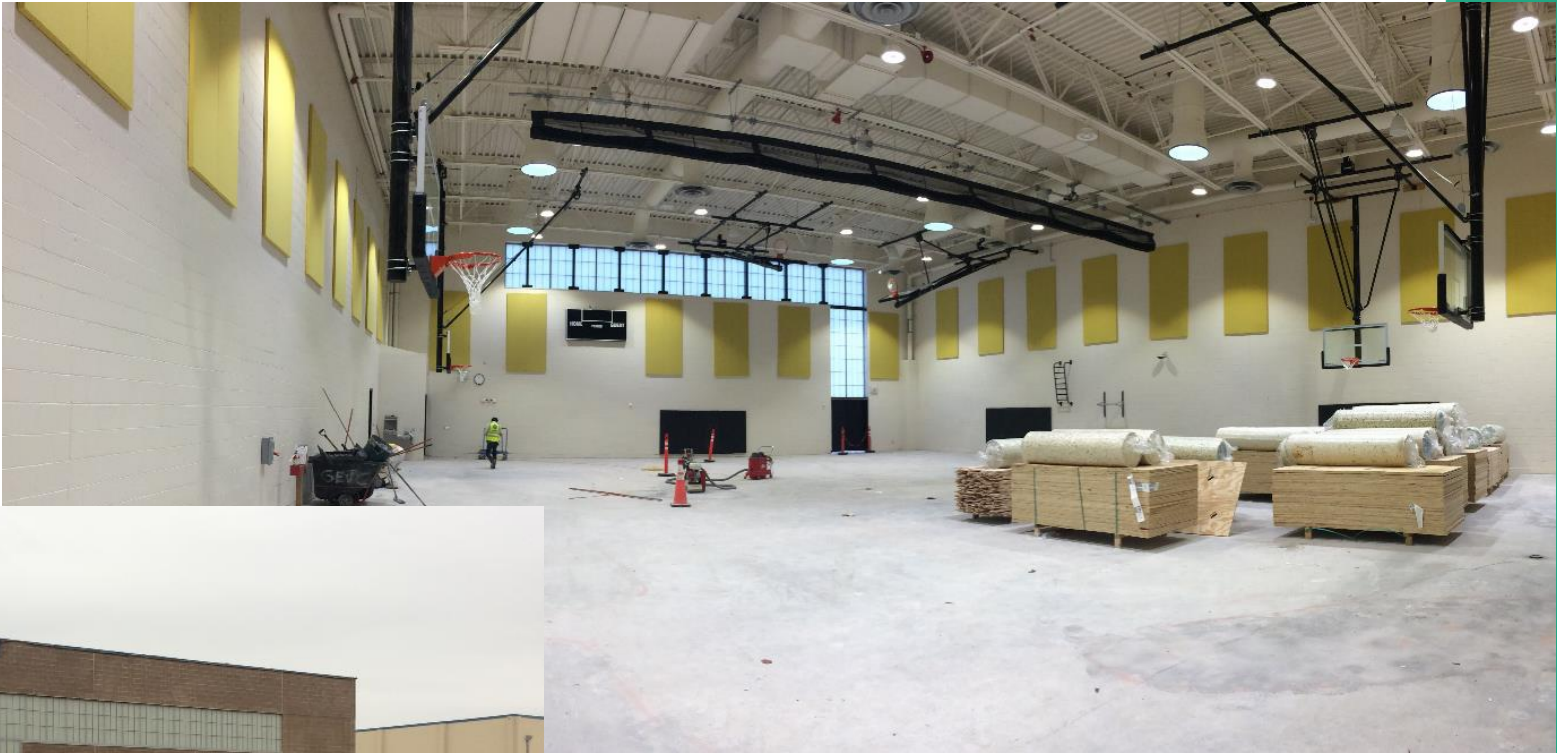
Columbine HS – Aux Gym Addition EIDOS – CMGC Swinerton

Construction



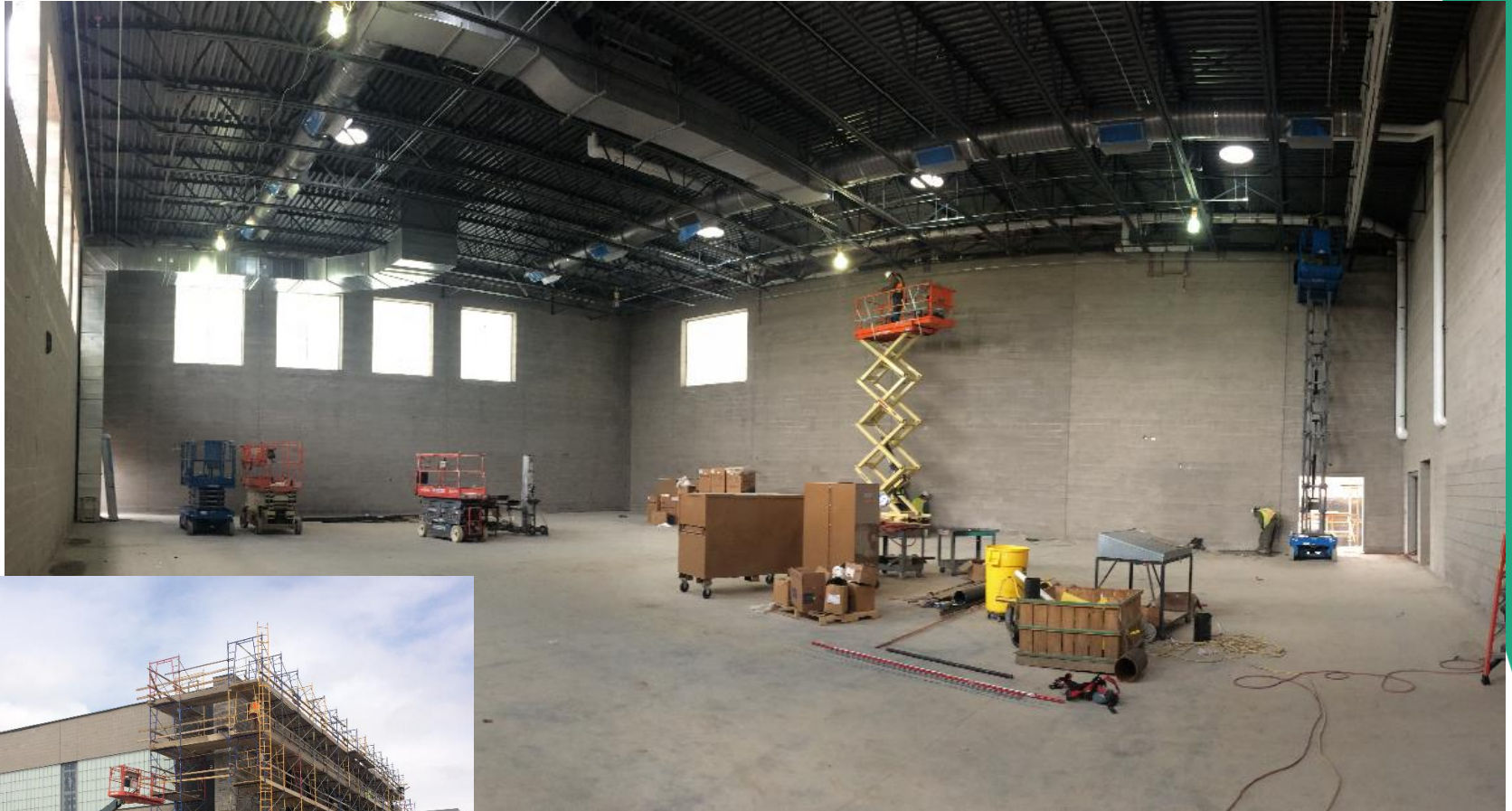
Green Mountain HS – Aux Addition MOA – CMGC GE Johnson

Construction



Jefferson HS – Aux Gym Addition MOA – CMGC Haselden

Construction



Alameda HS – Addition WOLD – CMGC Phipps

Construction



CTE South – New Building HCM – GC JHL

Construction



Manning Opt – 1 Story – 7 Classroom Addition AMD – GC Fransen Pittman

Construction



Bell MS – 1 Story, 4 Classroom Addition Eidos – GC Golden Triangle

Construction



Wayne Carle – 2 Story – 8 Classroom Addition RB+B – GC Basset

Construction



Lumberg ES – 4 CR Addition MOA – CMGC Haselden

Construction



Parmalee ES – 1 Story –
6 Classroom Addition
OZ – GC Saunders

Construction



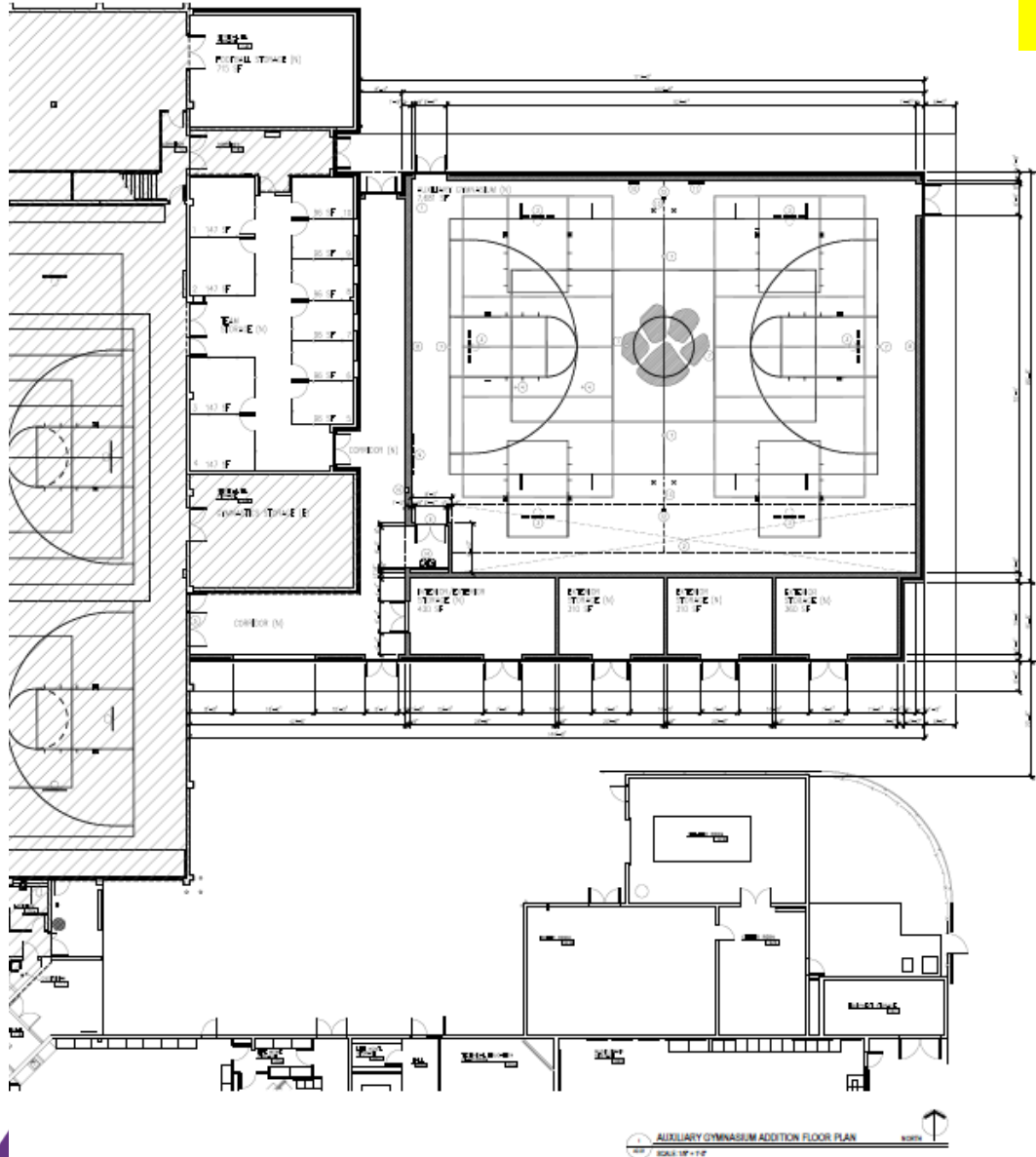
Foster ES – 1 Story – 7 Classroom Addition Larson Incitti – GC GE Johnson

Construction



Pomona HS – Aux Gym Addition Sybazz – CMGC Saunders

Construction
4/21 11:00AM
Ground Breaking



Marshdale ES - Replacement

Construction

HCM – GC GH Phipps



JEFFCO PUBLIC SCHOOLS | MARSHDALE ELEMENTARY SCHOOL

SCHEMATIC DESIGN PACKAGE

10.16.2020

hord | coplan | macht

D'Evelyn – Addition & Efficiency Future Ready HCM – GC Himmelman

Construction



2021 24 Efficiency Future Ready & DW projects

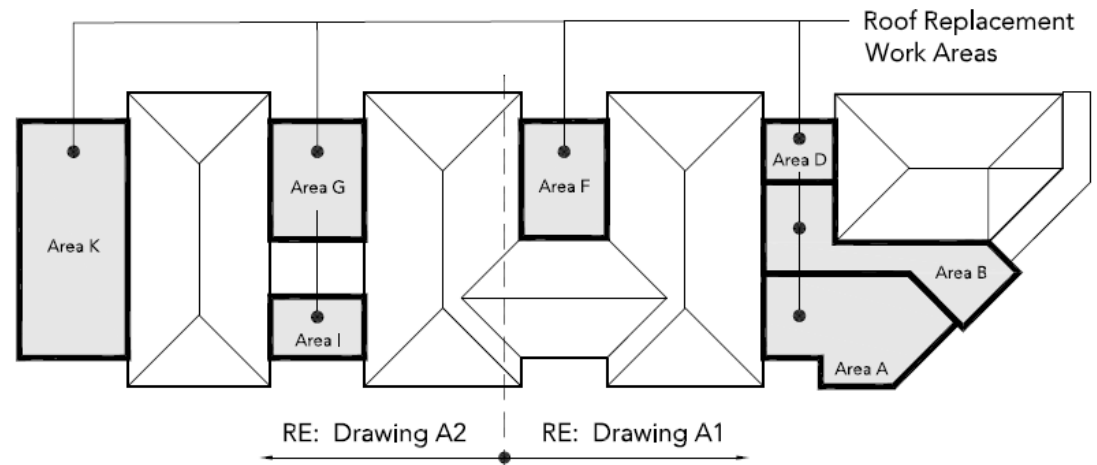
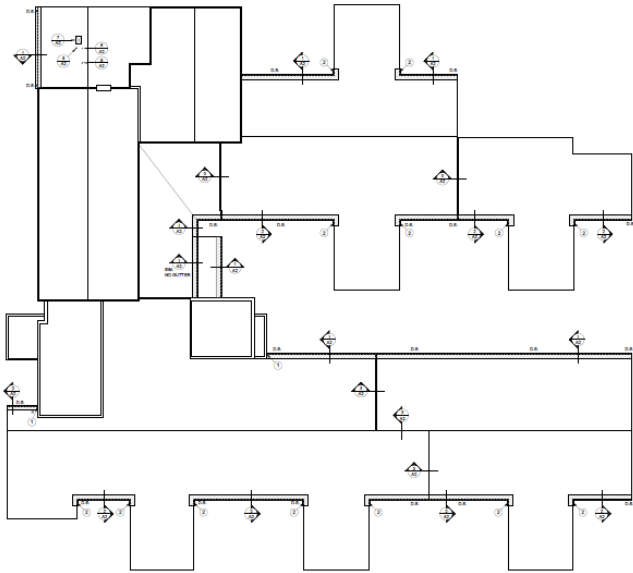
DW Roofing – 3 Schools

Construction

D'Evelyn Opt - SR-DK – Arapahoe - COMPLETE

Fitzmorris ES - SR-DK – Arapahoe

Lawrence ES - SR-DK – United Materials



DW Roofing – 3 Schools

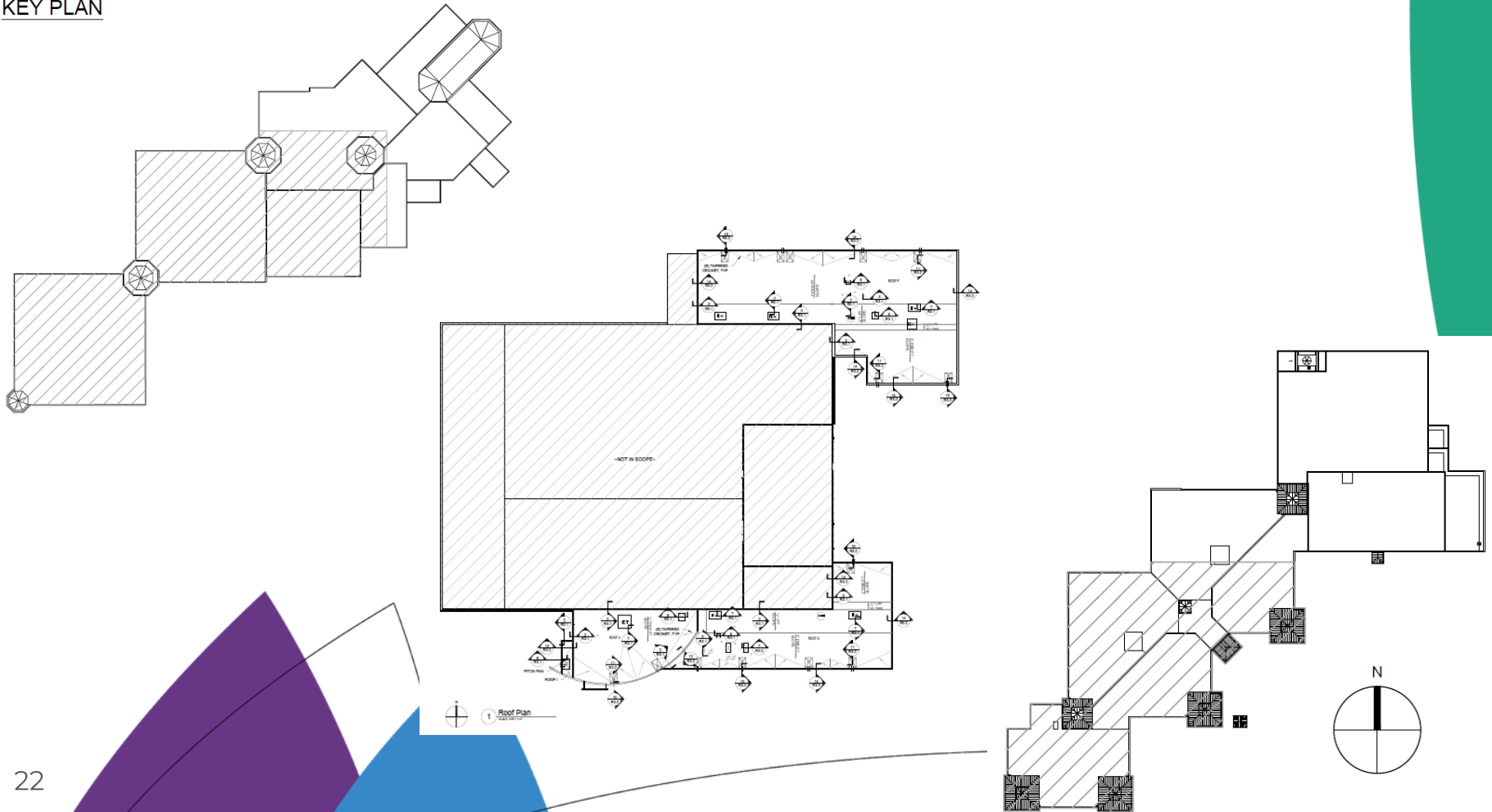
Emory ES - WJE - Powers

Westgate ES – WJE - United Materials

Stevens ES - WJE - Douglass

Construction

KEY PLAN



Maple Grove ES

Efficiency Future Ready

RTA – GC Golden Triangle

Construction



Kyffin ES
Efficiency Future Ready
Eidos – GC GH Phipps

Construction



Fitzmorris ES
Efficiency Future Ready
Eidos – GC Himmelman

Construction



Lawrence ES
Efficiency Future Ready
Eidos – GC Bryan Construction

Construction



Brady - Efficiency Future Ready

Construction

Alan Ford – GC Himmelman



Deane ES
Efficiency Future Ready
LOA – GC GH Phipps

Construction



Lasley ES Efficiency Future Ready

Construction

Treanor HL – GC PG Arnold



Patterson ES & Cottage Efficiency Future Ready

Construction

Treanor HL – GC PG Arnold



Dennison ES
Efficiency Future Ready

Construction

Hollis & Miller- GC MW Golden
All Alternates



Miller Special School
Efficiency Future Ready
Larson Incitti –GC Himmelman

Construction



Kullerstrand ES
Efficiency Future Ready
Larson Incitti – GC Himmelman
Alt 2, 3 & 6

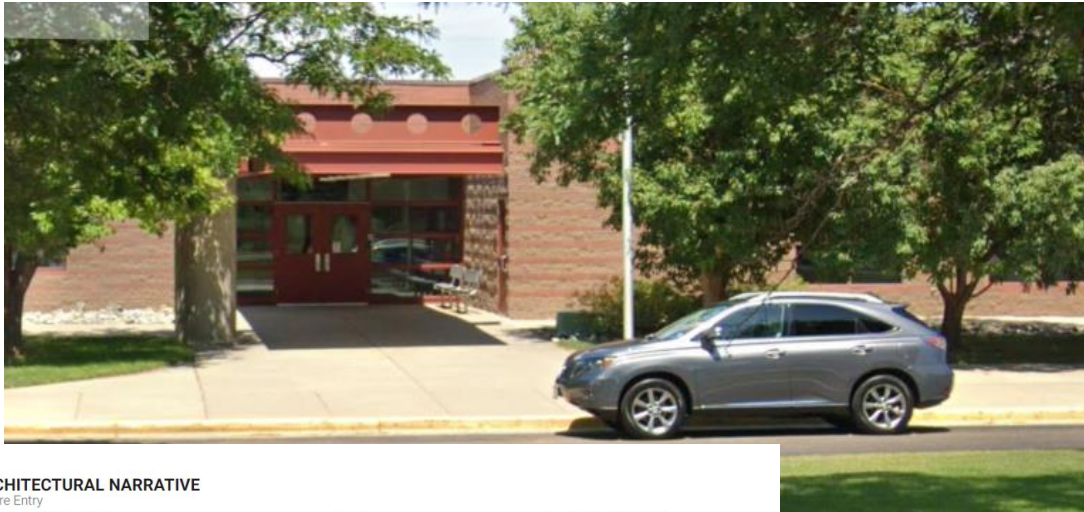
Construction



Ryan ES Efficiency Future Ready

Construction

RB+B – GC PG Arnold



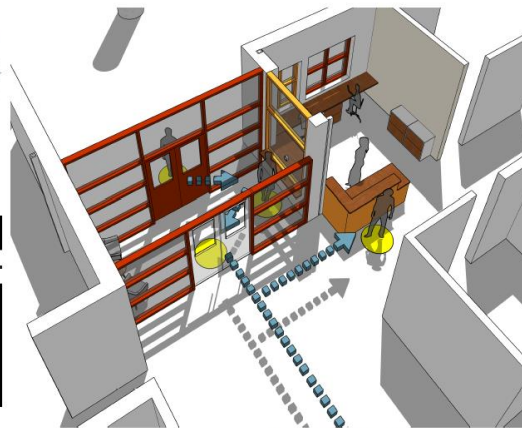
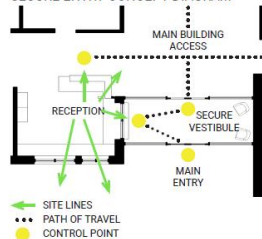
ARCHITECTURAL NARRATIVE

Secure Entry

Vestibule and Entry Changes

The existing hollow metal vestibules exterior and interior openings will remain in-place and only be modified to accept electronic strikes/access controls. The west wall of the vestibule will be opened to receive a new transaction window. The south exterior wall will be opened to receive a new exterior hollow metal window, allowing for enhanced visibility to any approaching visitors. The reception area will be re-configured to allow for three full workstations and better visibility to the main school corridor.

SECURE ENTRY CONCEPT DIAGRAM



PERSPECTIVE of SECURE ENTRY CONCEPT
Changes Highlighted in Orange

Sheridan Green ES

Efficiency Future Ready

Construction

RB+B – GC Himmelman

ARCHITECTURAL NARRATIVE

Replace Original Sports Court Flooring



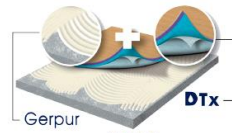
ARCHITECTURAL



SPORTS COURT FLOORING
GERFLOR - TARAFLEX SPORTS M PLUS



MAPLE DESIGN WITH MULTI-COLOR GAME LINES



Gerpur
GERFLOR
= Dry-Tex
SYSTEM
HIGH-MOISTURE FULL-SPREAD ADHESIVE

SHERIDAN GREEN ELEMENTARY SCHOOL
Schematic Design Submittal



Vanderhoof ES
Efficiency Future Ready
EUA – GC MW Golden

Construction



Stott ES
Efficiency Future Ready
EUA – GC Himmelman

Construction



Devinny ES
Efficiency Future Ready
DLH – GC Crossland Construction

Construction



Carmody MS Alt A1 & A4
Efficiency Future Ready
DLH –GC Mark Young

Construction



Westridge ES Efficiency Future Ready

OZ – GC Single Track



Bid
\$373,000

Budget
\$317,000

(\$56,000)
Over Budget

Everitt MS Efficiency Future Ready

OZ - Bassett



Bid
\$2,340,000

Budget
\$2,408,978

\$68,978
Below Budget

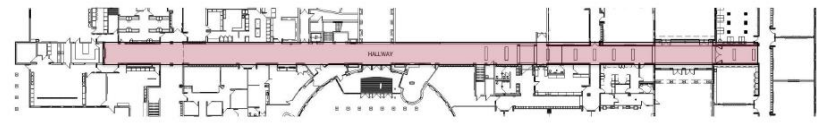
Chatfield HS, Dakota Ridge HS Efficiency Future Ready Cannon - TBD

Bid April 15

CANNONDESIGN



Dakota Ridge High School Hallway Carpet Replacement



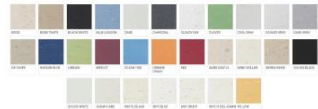
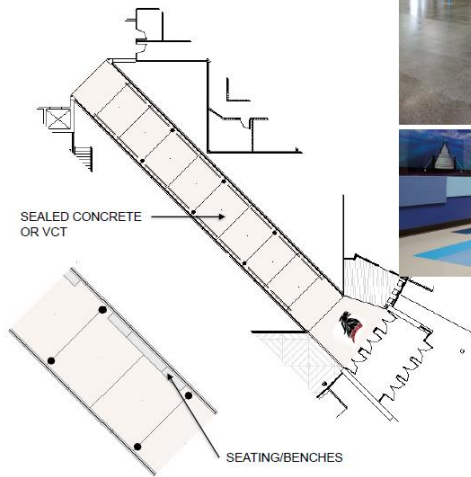
HALLWAY FLOOR FINISH REPLACEMENT



Chatfield High School Bridge



CANNONDESIGN



DW LED 2021 – Ackerman – CMGC McKinstry

GMP April 16



1. **Columbine Hills ES**
2. **Edgewater ES**
3. **Elk Creek ES**
4. **Emory ES**
5. **Kyffin ES**
6. **Red Rocks ES**
7. **Shaffer ES**
8. **Stevens ES**
9. **Stony Creek ES**
10. **Thomson ES**
11. **Warder ES**
12. **West Jefferson ES**

DW Turf Fields – HCM – CMGC Saunders

Construction

AHS



WRHS



Jefferson & Lumberg



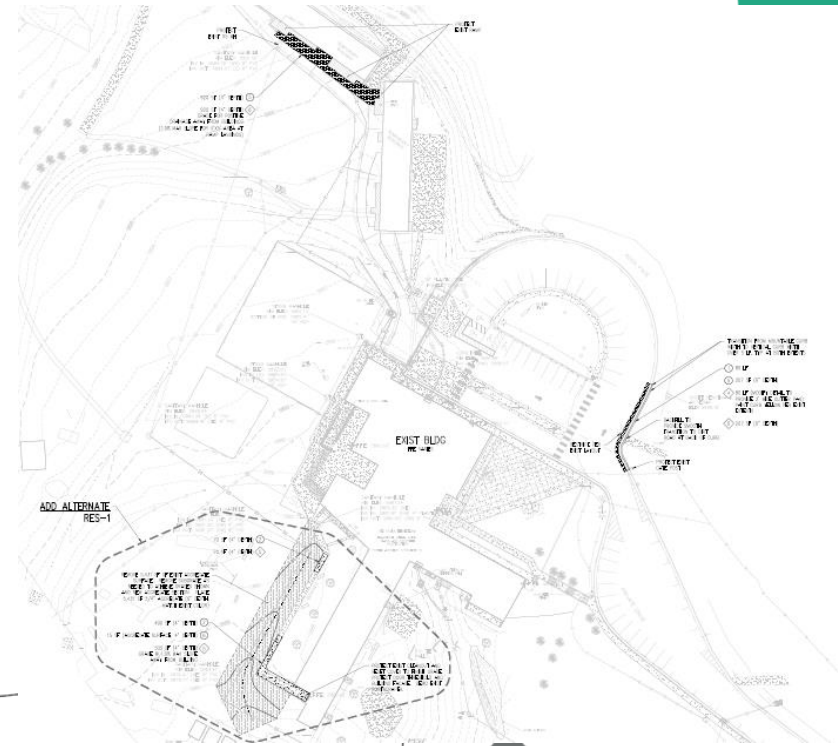
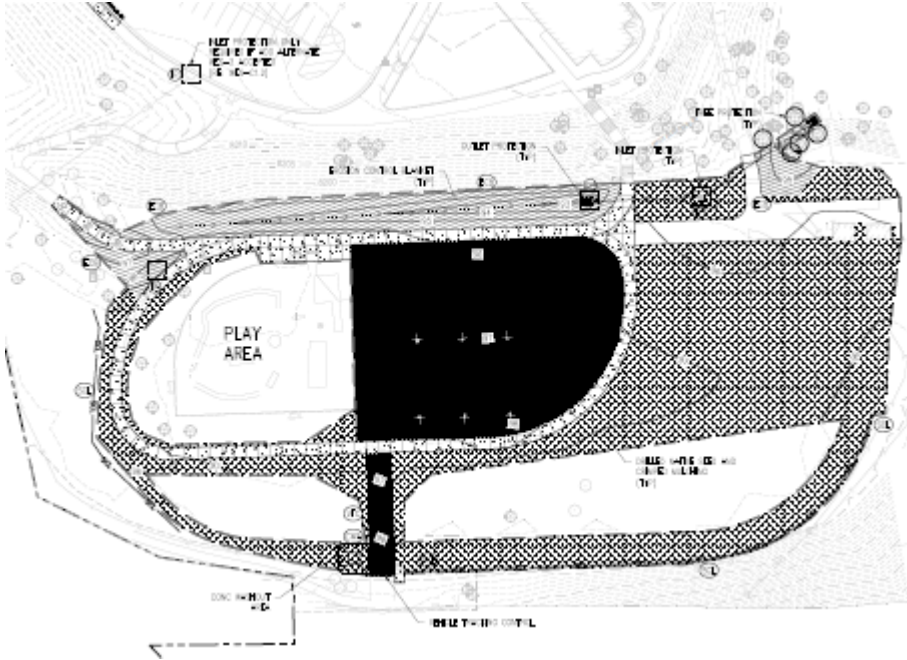
D'Evelyn



DW – Paving West Jefferson ES, Red Rocks ES

Construction

JVA – Concrete Express



Security Glass Installation 12 - Schools

Creighton MS	Rose Stein
Red Rocks ES	Mandalay MS
Weber ES	Moore MS
Meiklejohn ES	Drake MS
Ken Caryl MS 95% Complete	Dutch .
Leawood ES Glass on order	Conifer HS



DW – 9 – Playgrounds

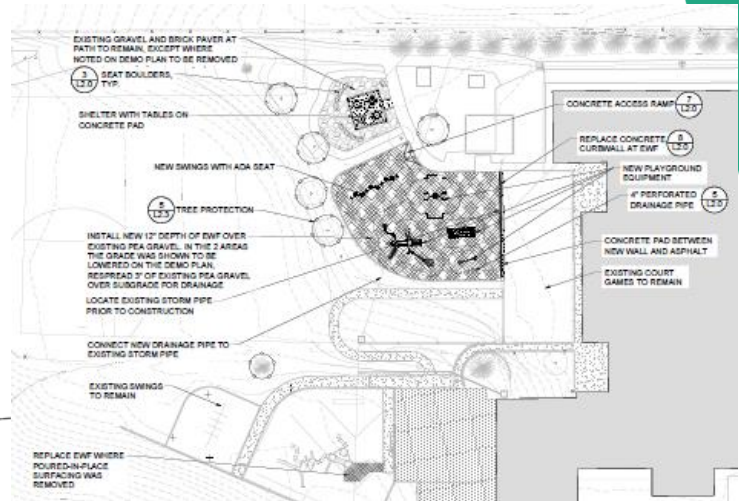
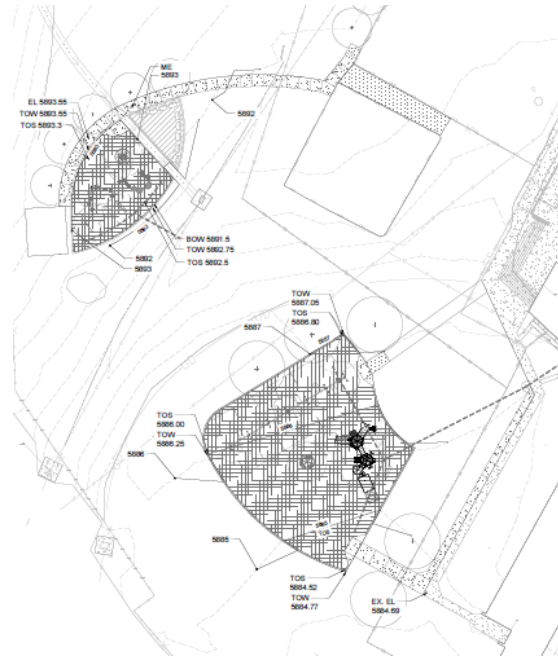
CAAC Vote Required

Full Name	Location	Original Budget	Revised Construction	Added
DW Playgrounds	Kyffin ES	\$120,015	\$ 182,912	\$ 62,897
	Red Rocks	\$60,008	\$ 206,056	\$ 146,048
	Peck ES	\$64,008	\$ 142,744	\$ 78,736
	Secrest ES	\$28,004	\$ 121,544	\$ 93,541
	Thomson ES	\$40,005	\$ 211,033	\$ 171,028
	Warder ES	\$3,600	\$ 216,828	\$ 213,228
	Elk Creek	\$56,007	\$ 101,853	\$ 45,846
	Normandy ES	\$48,006	\$ 250,370	\$ 202,364
	Shaffer ES	\$108,014	\$ 214,782	\$ 106,768
		\$527,667	\$1,648,122	\$1,120,456

DW – Playgrounds I – Group A Kyffin ES, Red Rocks ES, Peck ES

Bid
\$531,712

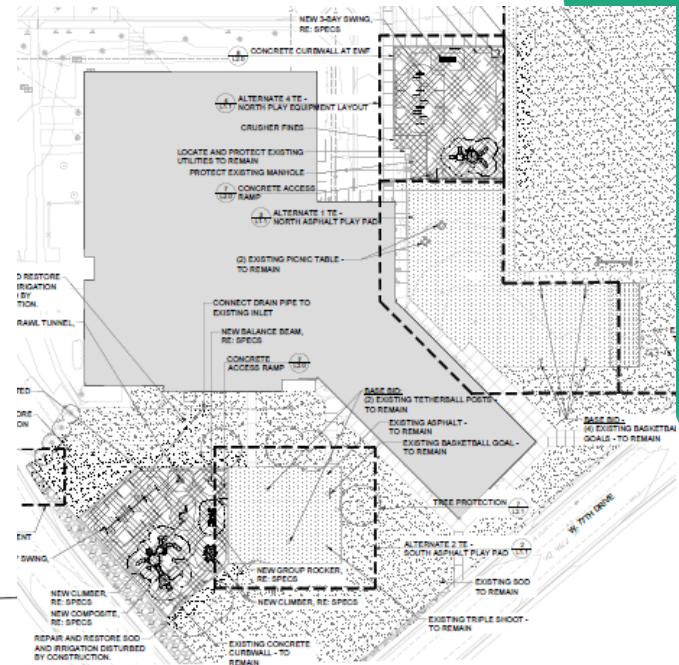
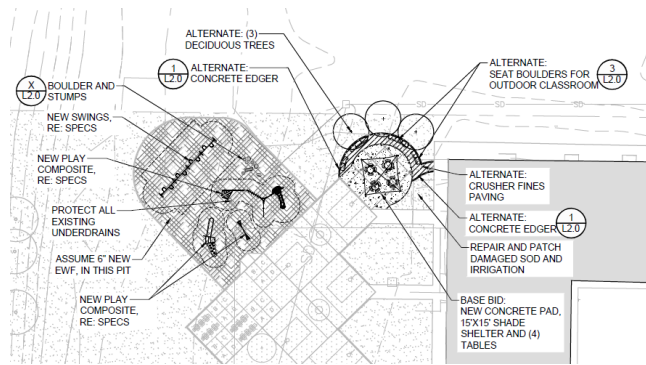
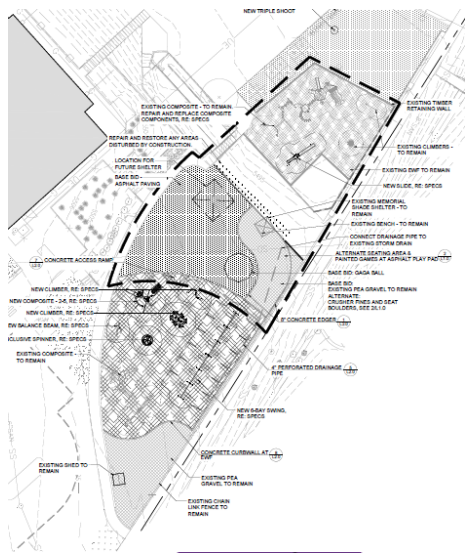
Design Concepts – T2



DW – Playgrounds I – Group B Warder ES, Secret ES, Thomson ES

Bid
\$549,405

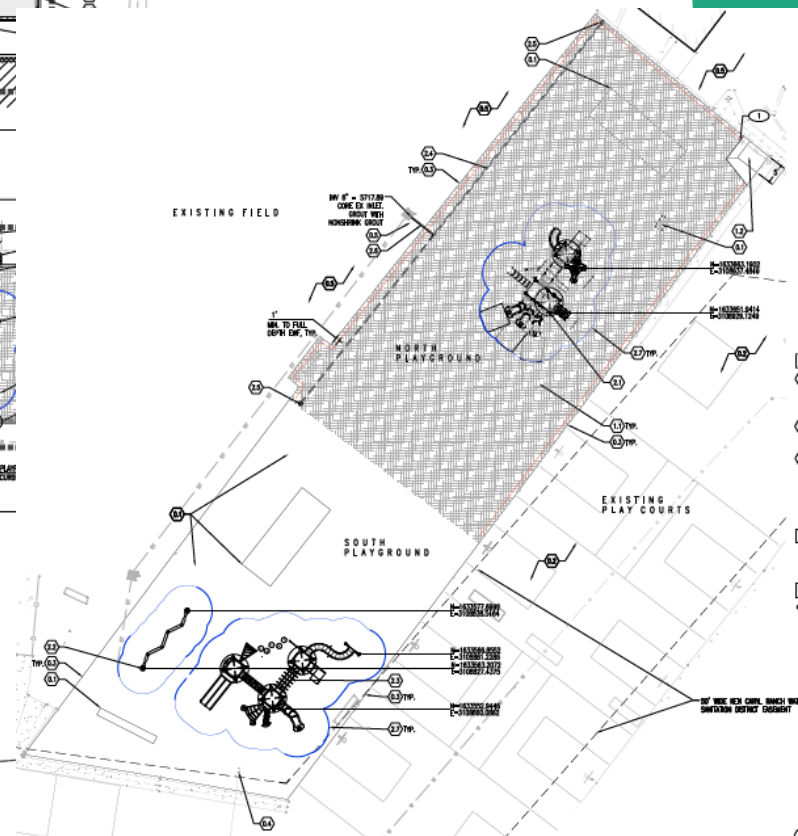
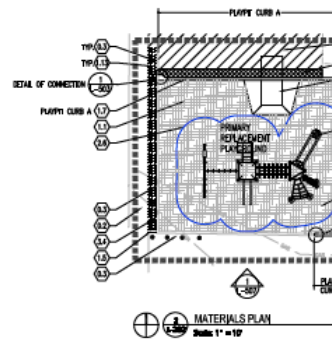
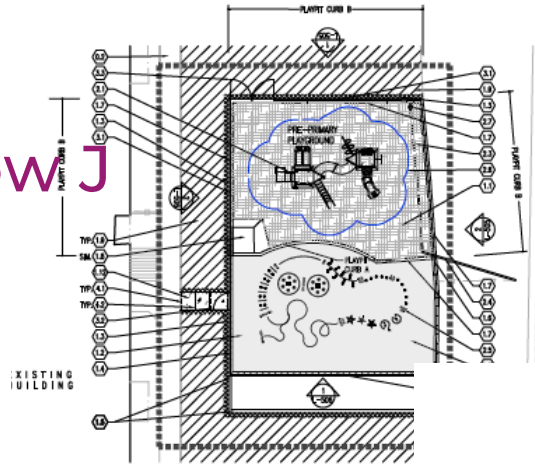
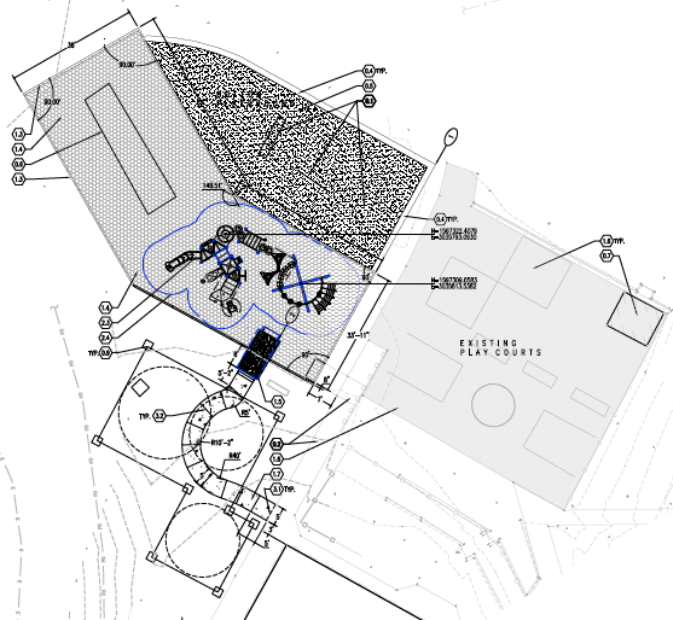
Design Concepts – T2



DW – Playgrounds – Elk Creek ES, Normandy ES Shaffer ES

Bid
\$ 567,006

Lime Green – Arrow J

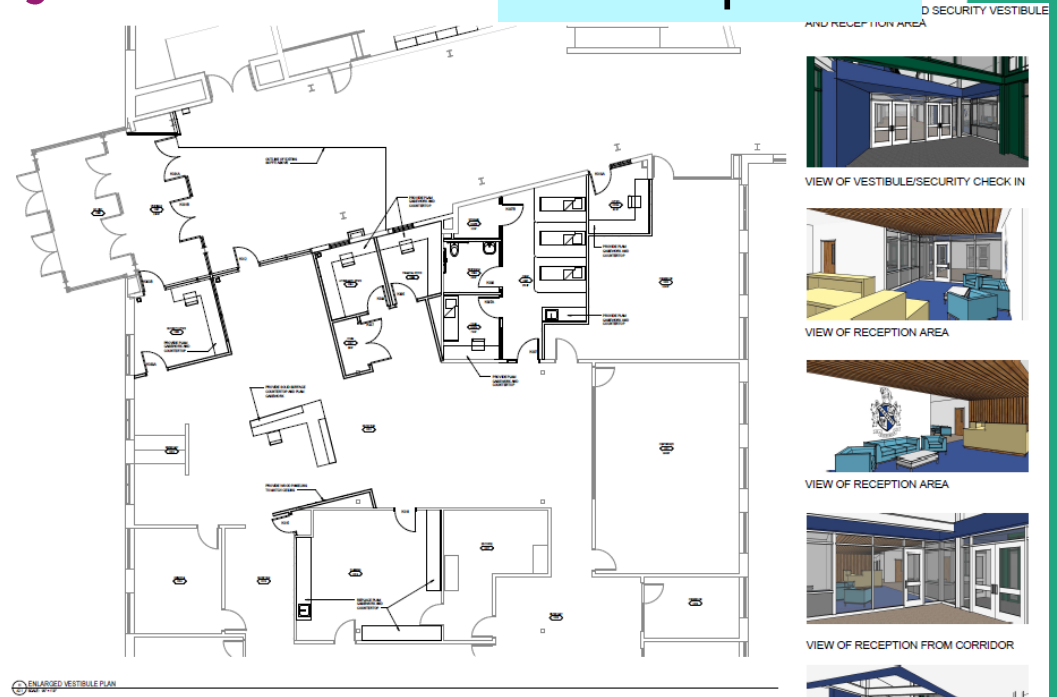


2022 Projects

New Buildings & Additions

Evergreen HS Efficiency Future Ready DLR – CMGC JHL

Design Development



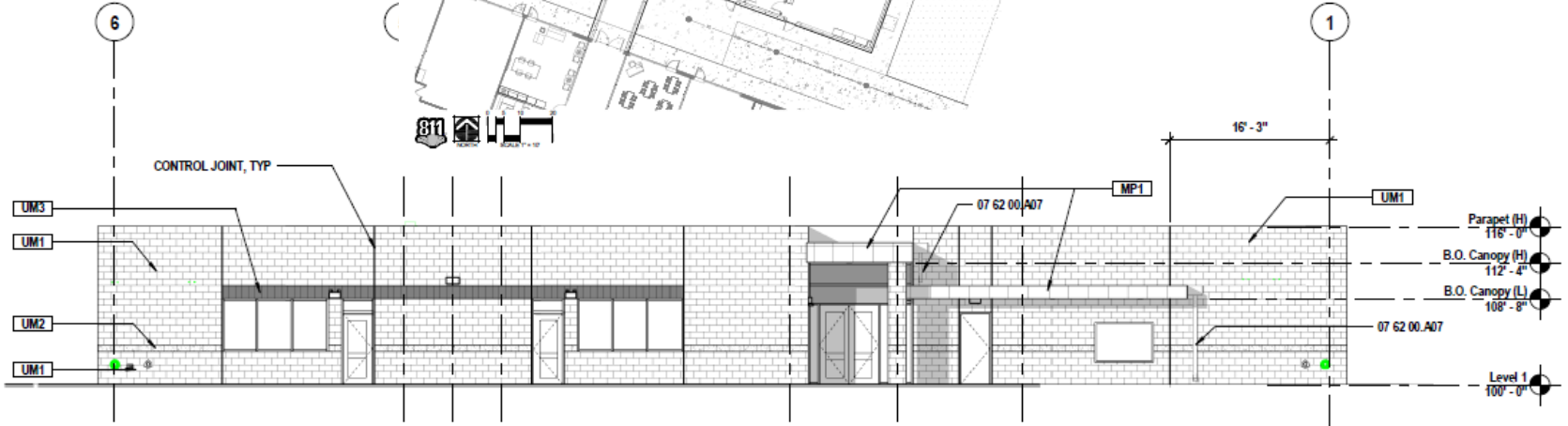
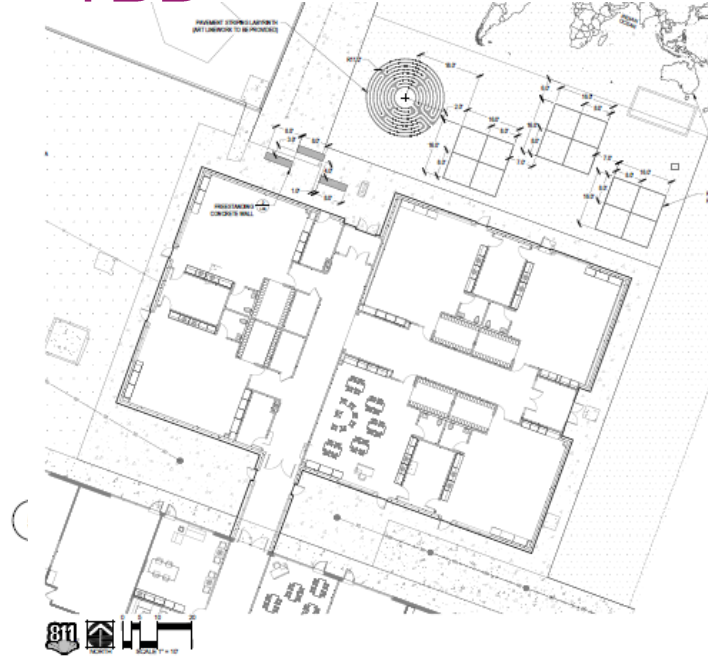
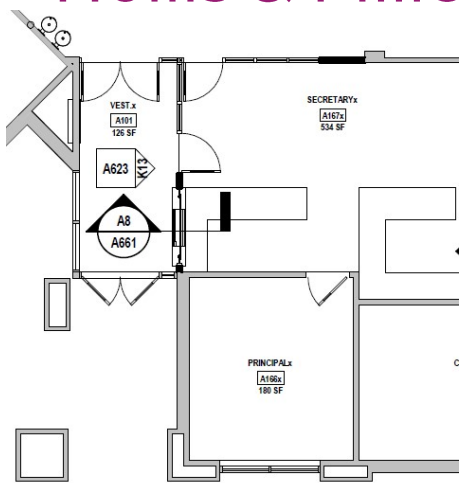
Prospect Valley ES - Replacement MOA - TBD

Construction
Documents
Summer Bid



Powderhorn ES - Addition Hollis & Miller – TBD

Construction Documents
Summer Bid



N6 Scale North Elevation
1/8" = 1'-0"

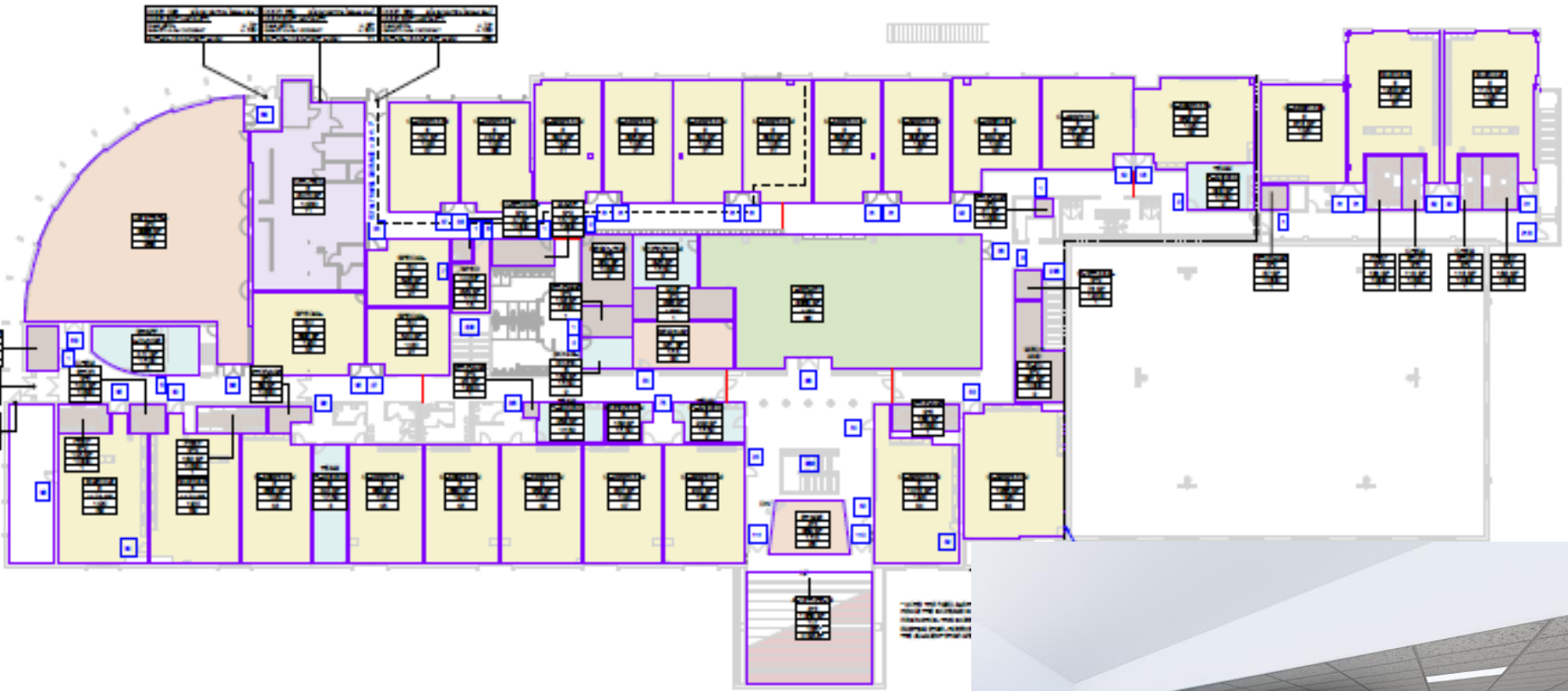
Standley Lake HS - Addition Cannon - TBD

Design
Development
Fall Bid



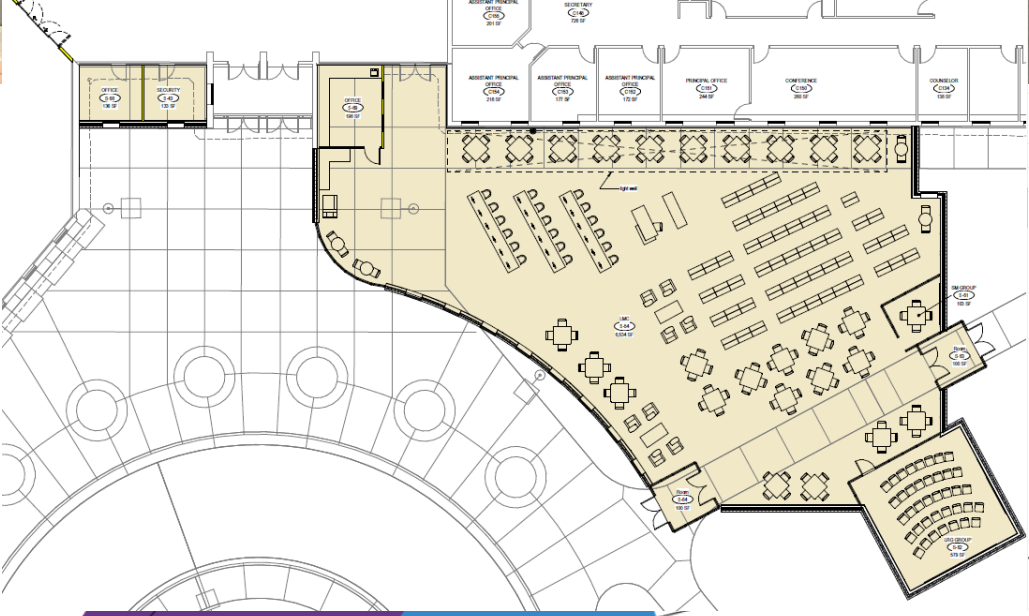
Evergreen MS Efficiency & Future Ready AMD - TBD

Design
Development
Fall Bid



Ralston Valley HS Addition EUA - TBD

Design
Development
Fall Bid



2022 44 - Efficiency Future Ready & DW projects

2022 Projects

Location	Articulation	Sched	Type	Description	A/E	Project Manager	Possible Replacement
Mortensen	Chatfield	9/1/21	ES	Efficiency & Future Ready	OZ	Bernadette Kelly	
Shaffer	Chatfield	9/1/21	ES	Efficiency & Future Ready	OZ	Bernadette Kelly	
Stony Creek	Chatfield	9/1/21	ES	Efficiency & Future Ready	OZ	Bernadette Kelly	
DW Playground 2022-I	JDW	9/1/21	DW	4 Schools - Peiffer, Governor's Ranch, Mt. Carbon, Glennon Heights	Design Concepts / Lime Green	Bernadette Kelly	
DW Playground 2022-II	JDW	9/1/21	DW	3 Schools - Campbell, Swanson, Fairmount	Design Concepts / Lime Green	Bernadette Kelly	
DW LED Lighting 2022	JDW	9/1/21	DW	13 Schools - Lawrence, Brady, Bradford North, Bradford South, Ute Meadows, Leawood, Normandy, Rooney Ranch, Creighton MS, Moore MS, Weber ES, Meiklejohn, West Woods	Ackerman	Bill Thaemert	
DW Paving 2022	JDW	9/1/21	DW	5 Schools - Campbell, Peiffer, S Lakewood, Little, Falcon Bluffs	JVA	Bill Thaemert	
Creighton MS	Lakewood	9/1/21	MS	Efficiency & Future Ready	Larson Incitti	Danelle Berzoza	Replaced Oberon
Peck	Arvada	9/1/21	ES	Efficiency & Future Ready	Larson Incitti	Danelle Berzoza	
Secrest	Arvada	9/1/21	ES	Efficiency & Future Ready	Larson Incitti	Danelle Berzoza	
DW Elevator Upgrades 2022	JDW	9/1/21	DW	Elevator Upgrades 2022	Kone	David Curnow	
DW Modular Bldg Removal 2022	JDW	9/1/21	DW	Modular Bldg Removal 2022	In House	David Curnow	
Long View HS	OPT	9/1/21	ES	Efficiency & Future Ready	RTA	Doug Cooper	
Shelton	Golden	9/1/21	ES	Efficiency & Future Ready	RTA	Doug Cooper	
Bear Creek High	Bear Creek	9/1/21	HS	Efficiency & Future Ready	MOA	Ed Huszcza	Replaced Edgewater
Blue Heron	Dakota Ridge	9/1/21	ES	Efficiency & Future Ready	MOA	Ed Huszcza	
Colorow	Dakota Ridge	9/1/21	es	Efficiency & Future Ready	MOA	Ed Huszcza	
Lakewood High	Lakewood	9/1/21	HS	Efficiency & Future Ready	HCM	Hilary Porter	Replaced Molholm
Mt Evans	OELS	9/1/21	OELS	Efficiency & Future Ready	HCM	Hilary Porter	
Windy Peak	OELS	9/1/21	OELS	Efficiency & Future Ready	HCM	Hilary Porter	
DW Mechanical 2022	JDW	9/1/21	DW	Campbell, Fairmount, Falcon bluffs MS, Little, Van Arsdale	Columbine Engineering	Kimber Preece	
North Arvada MS	Arvada	9/1/21	MS	Efficiency & Future Ready	Eidos	Maggie Anderson	
Slater Elementary	Lakewood	9/1/21	ES	Efficiency & Future Ready	Eidos	Maggie Anderson	
Wheat Ridge HS	Wheat Ridge	9/1/21	HS	Efficiency & Future Ready + Turf Replacement	Eidos	Maggie Anderson	
Wilmore Davis	Wheat Ridge	9/1/21	ES	Efficiency & Future Ready	Eidos	Maggie Anderson	

2022 Projects

Location	Articulation	Sched	Type	Description	A/E	Project Manager	Possible Replacement
Emory	Alameda	9/1/21	ES	Efficiency & Future Ready	Treanor HL	Pam Grover	
Red Rocks	Bear Creek	9/1/21	ES	Efficiency & Future Ready	Treanor HL	Pam Grover	
Westgate	Bear Creek	9/1/21	ES	Efficiency & Future Ready	Treanor HL	Pam Grover	
DW Flooring 2022-II	JDW	9/1/21	DW	7 Schools - Swanson, Glennon Heights, S Lakewood, Little, Parr, Van Arsdale, Pennington	Treanor HL	Pam Grover	
Awest HS	Awest	9/1/21	HS	Efficiency & Future Ready	LOA	Sam Miller	
Mandalay	Standley Lake	9/1/21	ES	Efficiency & Future Ready	RB+B	Sam Miller	
Warder	Pomona	9/1/21	ES	Efficiency & Future Ready	RB+B	Sam Miller	
Warren OTC North	Awest	9/1/21	OTC	Efficiency & Future Ready	LOA	Sam Miller	
Bergan Valley	Evergreen	9/1/21	ES	Efficiency & Future Ready	H&M / BVH / EUA	Ted Hagan	
Elk Creek	Conifer	9/1/21	ES	Efficiency & Future Ready	H&M / BVH / EUA	Ted Hagan	
Golden High	Golden	9/1/21	HS	Efficiency & Future Ready	H&M / BVH / EUA	Ted Hagan	Replaced Bergan Meadow
Mitchell	Golden	9/1/21	ES	Efficiency & Future Ready	H&M / BVH / EUA	Ted Hagan	
West Jeff	Conifer	9/1/21	ES	Efficiency & Future Ready	H&M / BVH / EUA	Ted Hagan	
Green Mountain	Green Mtn	9/1/21	ES	Efficiency & Future Ready	Sybazz	Troy Antill	
Stevens WR 5-8	Wheat Ridge	9/1/21	ES	Efficiency & Future Ready	Sybazz	Troy Antill	
Thomson	Arvada	9/1/21	ES	Efficiency & Future Ready	Sybazz/ Intergroup	Troy Antill	
DW Flooring 2022-I	JDW	9/1/21	DW	7 Schools - Dear Creek MS, Falcon Bluffs MS, Summit Ridge MS, Peiffer, Governor's Ranch, Mt Carbon, Rooney Ranch	Sybazz	Troy Antill	
DW Roofing 2022	JDW	9/1/21	DW	5 schools - Summit Ridge MS, Campbell, Fairmount, S Lakewood, Little, Parr, Pennington	Cave, WJE, SRDK, Roof Tech	Troy Antill	
DW Security Glass 2022	JDW	9/1/21	DW	11 schools - Swanson, Awest, Campbell, Fairmount, BCK8, Summit Ridge MS, Glennon Heights, S Lakewood, Little, Parr, Pennington	In House	Troy Antill	

Next Meeting 5/20/21

2018 BOND PROGRAM COMMUNICATIONS UPDATE

CAPITAL ASSET ADVISORY COMMITTEE

APRIL 2021

COMPLETED WORK:

- "A School Building is Born" - [Canyon Courier Marshdale Story](#)
- Updated system and flipbook with Construction Finance Team:
 - [Updated April 2021 Flipbook](#)
- [Preview of Spring Construction](#) story
- Weekly JeffcoBuilds social media posts (see below)

Website analytics:

Jeffcobuilds.org and all pages with "jeffco builds" in the URL (ie sub-pages)

Jeffco Builds page performance	Page views	Unique page views
March 2021	1,993	1,741
April 2021	1,422	1,250
% change	13% decrease	12% decrease

UPCOMING WORK:

- Events:
 - Kendrick Lakes Ribbon cutting (Date change!) - April 23 (@ 10 am)
 - Pomona Groundbreaking - April 21 (@ 11 am)
 - Green Mountain High School Ribbon Cutting - May 1 (@ 12:30 - after their service day)
 - Marshdale - TBD
- Preview to Summer Construction story

